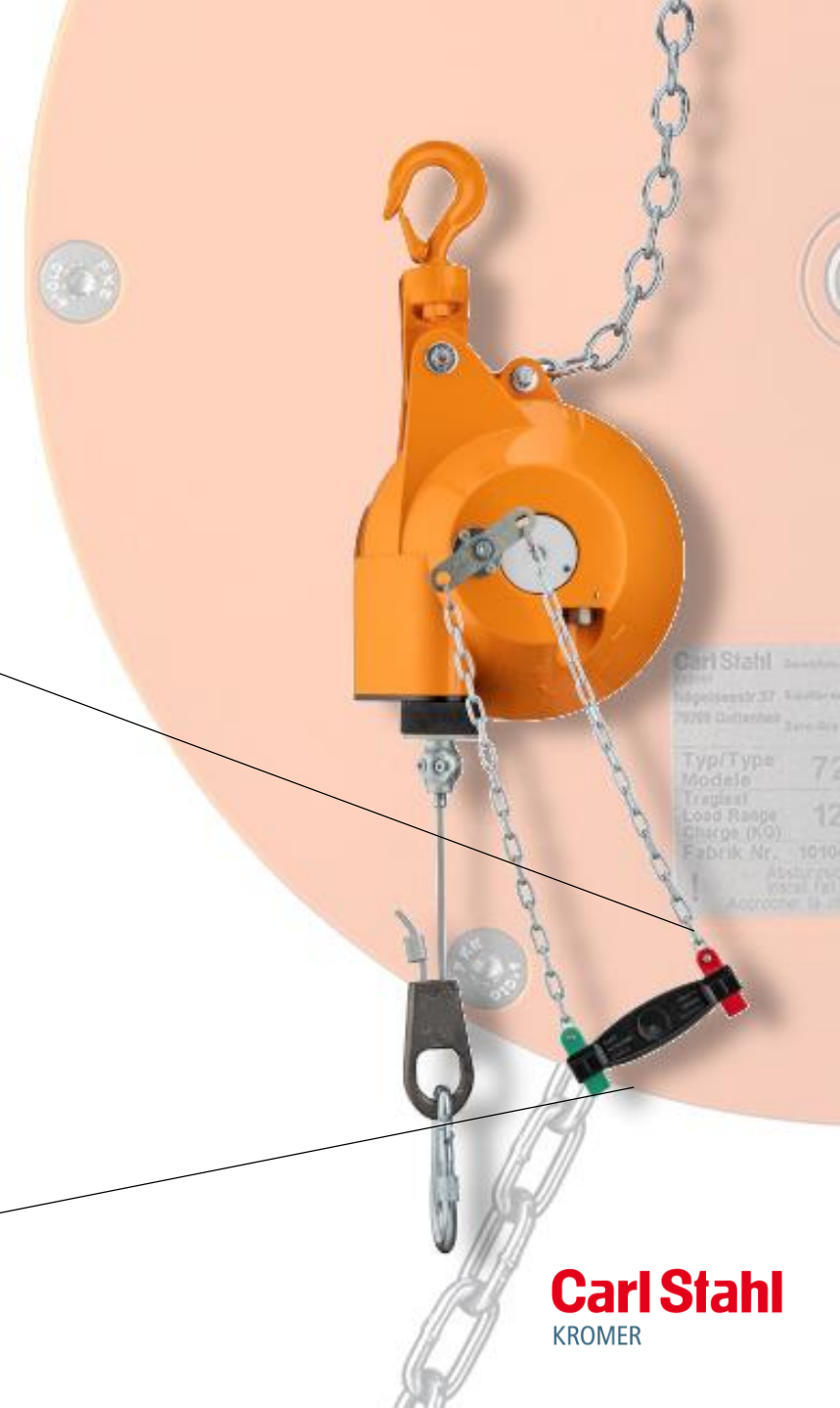


# Manual ratchet lock

Special edition for  
**Kromer Type 7241**



**Carl Stahl**  
KROMER

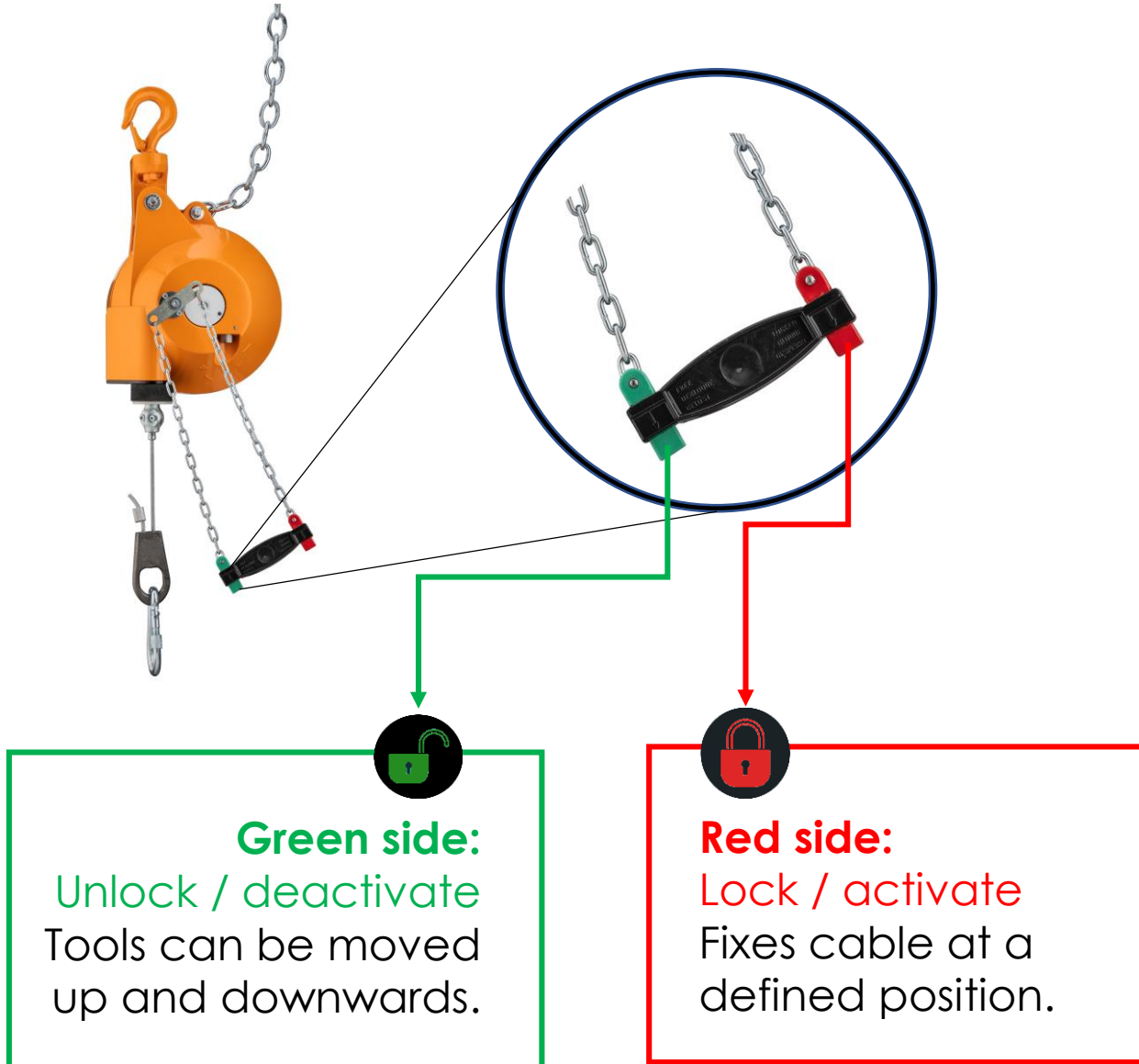
# Content

1. How the system works
2. Activate the manual ratchet lock
3. Deactivate the manual ratchet lock
4. Contact and support





## How the system works



### The ratchet lock system

The ratchet lock is an arresting mechanism that locks the retracting cable in defined positions. For some specific applications this mechanism helps to support ergonomics.

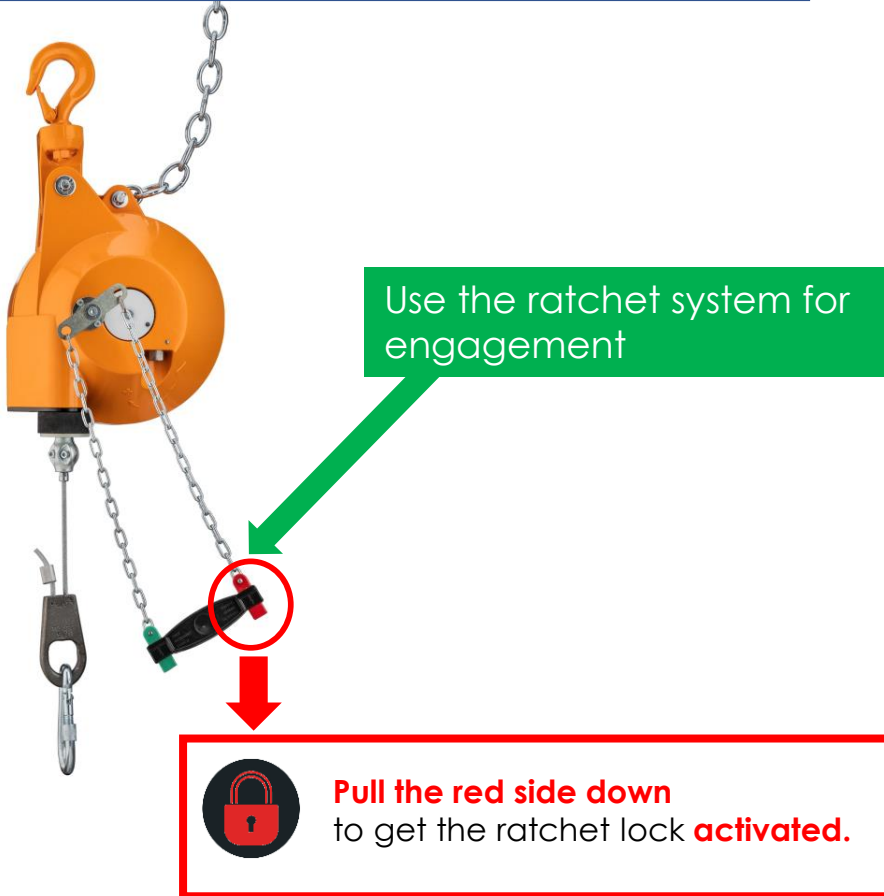
### The manual ratchet lock system, increases the usability for Kromer Type 7241:

No tools are necessary for the engagement.

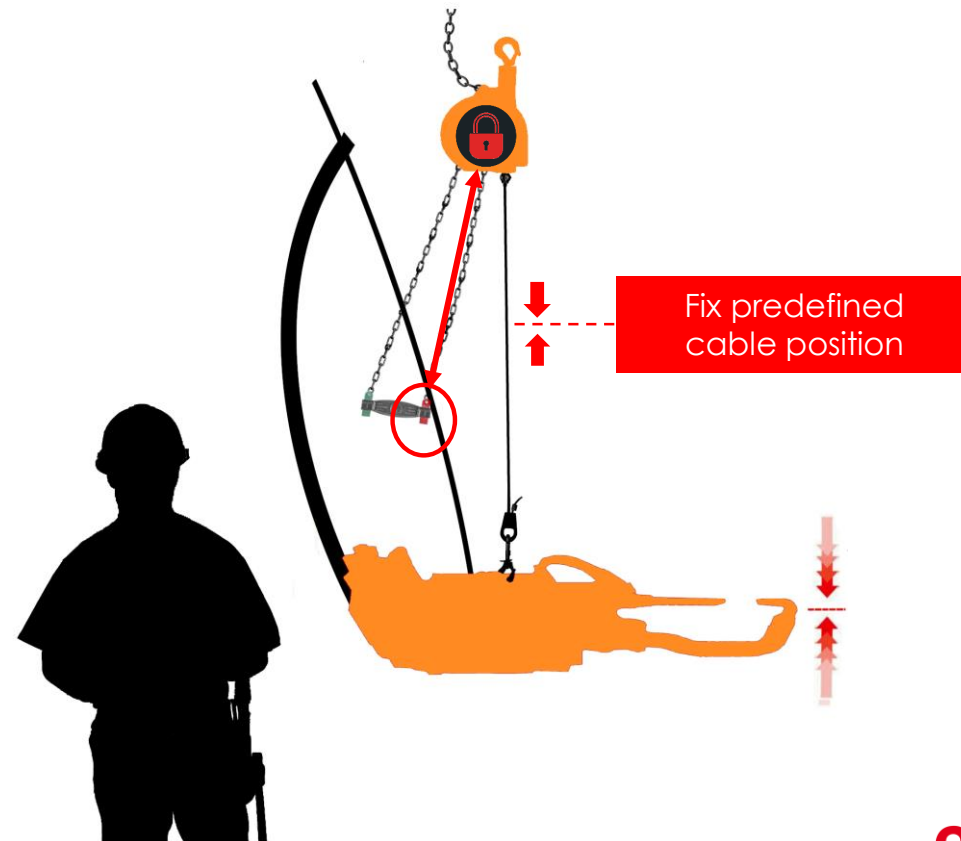


# How to **activate** the manual ratchet lock.

## 1. The correct use of the ratched lock:



## 2. Cable drum is locked when the system is activated.





# How to **deactivate** the manual ratchet lock.

## 1. Deactivate the ratchet system in 2 steps:



**ATTENTION: HIGH SPRING TENSION !!!**  
The mechanism is **NOT** suitable for load changes → Do **NOT** change deactivate system without attached load !

**STEP 1:**  
To unlock the system again **pull down the cable a little bit first.**

Keep holding the cable in this position and go on with STEP 2.

**STEP 2:**  
While holding the cable (Step 1), the ratchet system is ready for use.

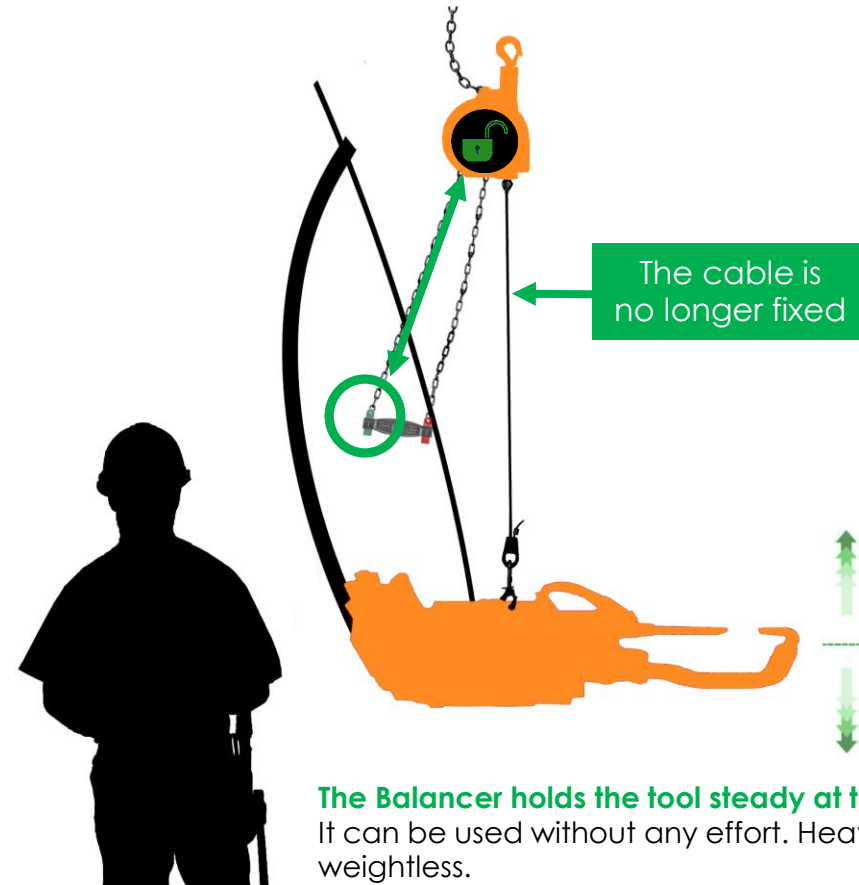
Now **just pull on the green side** to **deactivate** the ratchet lock system.

STEP 1

STEP 2



## 2. Drum is unlocked now:



**The Balancer holds the tool steady at the desired position.**  
It can be used without any effort. Heavy loads become weightless.

# Contact us



+49(0) 7665 50207 - 0



[kromer@kromer.com](mailto:kromer@kromer.com)



[www.kromer.com](http://www.kromer.com)