

A close-up photograph of an orange industrial component, likely a part of a hoist or lifting system. A silver cable is connected to a metal fitting on the side of the orange plastic housing. The background is blurred, showing industrial structures. A large red diagonal graphic element covers the right side of the image.

Carl Stahl

KROMER

COMPANY PROFILE

COMPANY
PRODUCTS
SERVICES

www.carlstahlkromer.com



Contents

About our company3-4

History, facts and more

About our products5-11

Portfolio, applications and performance

About our services12

Trainings, customization and spare parts

About your benefits13

Carl Stahl Kromer benefits

Contact details14-15

E-Mail, phone, address and social media

About our **company**

Know-How over 100 years

Carl Stahl Kromer is a family-owned company based in the south-west of Germany. We have been manufacturing first-class spring balancer for more than 100 years. We are among the leading manufacturers in this area.



Kromer products contribute to smooth processes and ergonomic work stations in many well-known companies all over the world.



We always put customers' interests first. Our spring balancers, air hose balancers, and positioners are designed to improve ergonomics at the work station, to reduce costs, improve handling, and to relieve workers of loads.

The Carl Stahl Group

Our Company is integrated into the Carl Stahl Group, which is a global enterprise with over 1.700 employees.

The Carl Stahl Group could reach an turnover of over 350 Mio. € with 70 locations on 4 continents in the year 2018.

About our company

What is truly important to us

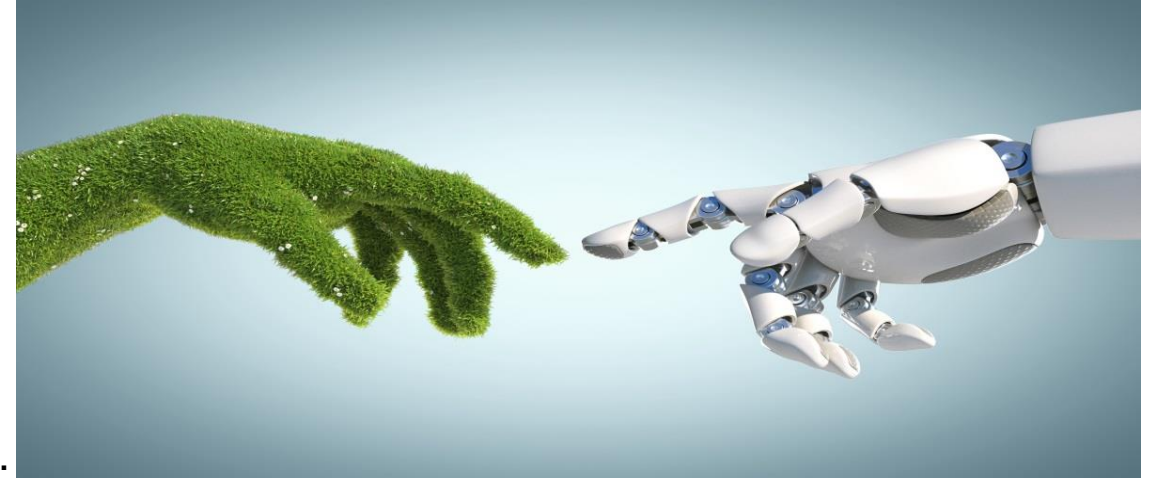
Company management policy statement on quality and environmental policy

Three criteria form the pillars of our corporate behavior:

- ✓ Our staff is the foundation of our company.
- ✓ The satisfaction of our customers is the foundation of our success.
- ✓ Environmental protection is the basis for the existence of our society



Environmental protection and sustainability are also values that are important to our company. A functioning ecosystem is the foundation for the existence of our society and must not be endangered.



Among the measures to achieve this goal are increasingly reducing paper usage, introducing a modern scanning system, and developing a well-thought-out **environmental management concept** which all staff are bound to support.

Carl Stahl Kromer is also environmentally certified according to **EN 14001** and supports a **sustainable forestry project** in Uruguay, certified by the Verified Carbon Standard. Carl Stahl Kromer is a **CO2 neutral company**.

About our products

Quality Made in Germany

All our products have been developed, designed, and manufactured according to the most stringent quality standards. We focus on practicality and always aim for the highest level of user satisfaction. We regularly optimize and expand our product range, investing creativity, passion, and innovation to stay abreast of the latest trends.



Our products are an excellent example of the value expressed by “Made in Germany”. Our spring balancer are all tested, meet the requirements of DIN 15112, and bear the “GS mark” symbolizing ‘tested for safety’. They also conform to the CE standard.

PREMIUM QUALITY
MADE IN GERMANY



Simplicity

Everything from a single source thanks to a comprehensive product range. Modular design of the devices. Easy and fast maintenance.



Safety

More security through constant inspection checks. Only manufacturer with GS certification. Safe handling of the products.



Precision

Specially designed for very sensitive work. Ensures high precision in daily work.



Power

Reliability and longevity of the products guarantee a steady and high performance.



Quality

CSK products are manufactured to the highest quality standards. CSK is the worldwide quality leader.

About our **products**

Automotive industry

The automotive industry requires the highest precision, speed and reliability. Work processes such as assembly work and repair must be proceed quickly, safely, and smoothly. Tool changes must be simple and must not cause interruptions. Kromer's high-quality spring balancers and zero-gravity balancers are perfectly suited to such requirement.



Kromer is the only manufacturer that can offer balancers with load capacities of up to an exceptional 300 kg.



„PRECISION,
SPEED AND
QUALITY IS
REQUIRED“

New Audi A8 assembly, Neckarsulm, Germany
Source: www.audi-mediacycenter.com

About our products

Meat processing industry

Hygienic and environmental requirements in the food sector

In the food industry, using original rust free balancers Carl Stahl Kromer do not only ensure the high work performance, but also ensure compliance with hygienic and environmental requirements in this area.



✓ RUST-FREE MATERIALS
✓ FOOD GRADE GREASE



With Kromers the load always remains stable in the desired position and the balancers balance the heavy load. The worker does not need to apply much force, since the suspended tool seems nearly weightless. In slaughterhouses, for instance, saws weighting up to 95 kg can be used effortlessly thanks to balancers from Carl Stahl Kromer.

About applications



Welding equipment



Torque arm station



Assembly station



Supply units

For more applications

- Power tools
- Air tools
- High pressure floor polisher
- High pressure cleaning equipment
- Stapling machines
- Guns / airbrushes for spray paint
- Screw guns
- Cutting machines
- Nailing machines
- Tying tools for cables
- Soldering irons
- Marker machines
- Riveters
- Machines for cellars
- Bottling machines
- Sheet welding machines
- Push-button panels for cranes
- Extraction systems
- Exhaust gas / combustion hoses
- Adjustable arms
- Robot supply cables
- X-ray tools
- Robot for dimensional control
- Tools for slaughterhouses
- Suspension of equipment for leather processing
- Tools for working the rocks
- Power supply busbars
- Tools for working wood
- Submersible pumps and stirrers
- Industrial sewing machines
- Tools for packing
- Welding guns
- Welding jigs
- Calipers for holes and micrometers
- Hoses for gas pumps
- Filling machines for the food industry
- Electrical and pneumatic staplers

About our **product portfolio**



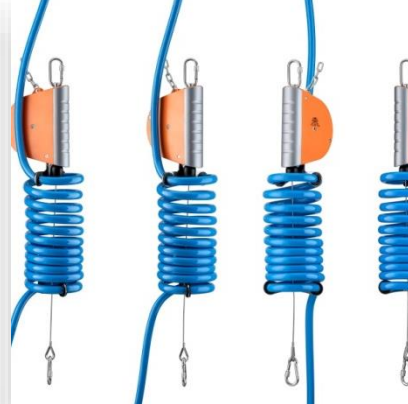
Spring balancers

Kromer spring balancers (retractors) keep loads up to 14 kg within easy reach, contributing to an orderly work station. They are designed so that the tool is automatically retracted to its initial position when it is released after use.



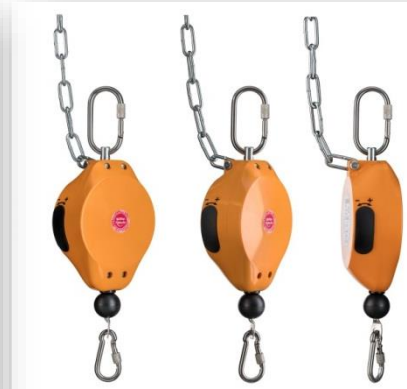
Zero-gravity balancers

Kromer zero-gravity balancers (balancers) keep loads suspended reliably and safely at any height. After the cable is pulled out, the load remains in the desired position. The low retraction force allows very precise, delicate work.



Air hose balancers

Kromer air hose balancers feature a sturdy air hose for compressed air supply. This makes them eminently suited to use with pneumatically operated tools.



Positioners

Our positioners have been specially designed to keep supply units for water, compressed air, or power/electrical energy unit within easy reach at the desired, manually adjustable height.



Rust-free Edition

Our special product line for the food industry. Spring balancer and zero-gravity balancer with rust-free materials and food grade grease. All functions and safety standards adapted from our regular product portfolio.

About our **safety standards**

Five times safety on all components

Safety expansion chain

Maximum fall distance 10 cm

High strength aluminium alloy housing

Tested security label

Comply with the stringent German industrie standard

- **DIN 15112**
- **GS mark** – tested for safety

PREMIUM QUALITY
MADE IN GERMANY



DIN
15112



High-strength safety hook

Spring fracture safeguard

- Load range > 3 kg
- In case of spring brake, drum gets blocked by the housing
- Maximum fall distance of the load is 10 cm

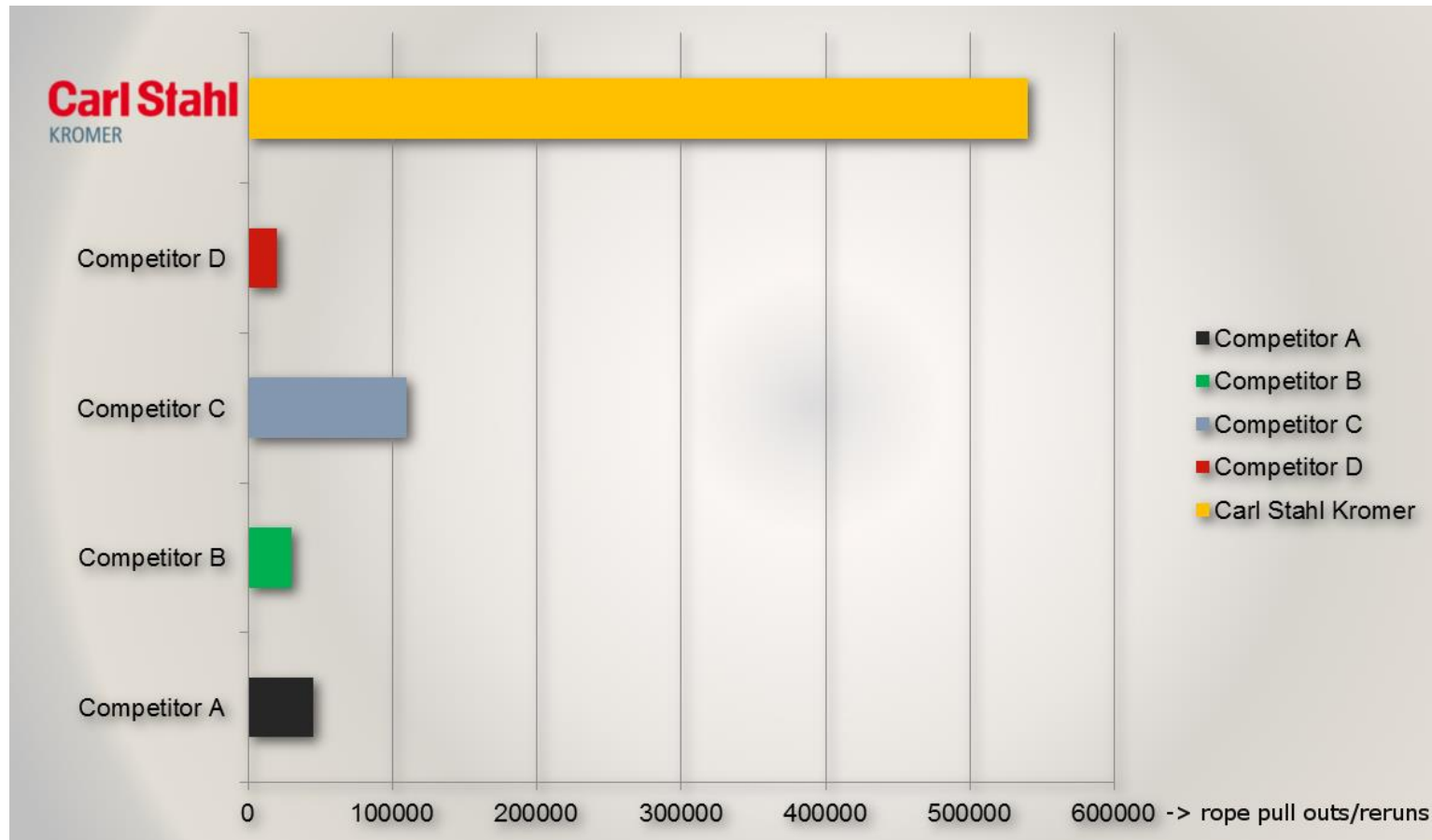
Cable stop buffer

Steel cable (rotation free)

Screw type snap hook

About quality

All leading balancer brands tested until failure



Test parameter: 85 KG load capacity, cable travel 1,5 m

A six-month comparative study by the Esslingen University of Applied Sciences shows that Carl Stahl Kromer balancers are clearly in the lead in all tested areas.

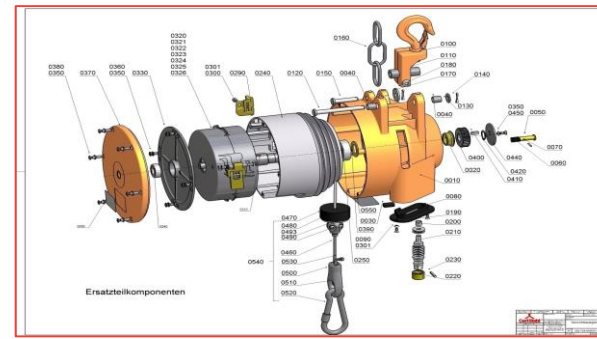
They outperformed competing products in service life, precision, and safety, in some cases by wide margins.

Note:

The best competitor balancer broke after 110.000 strokes.

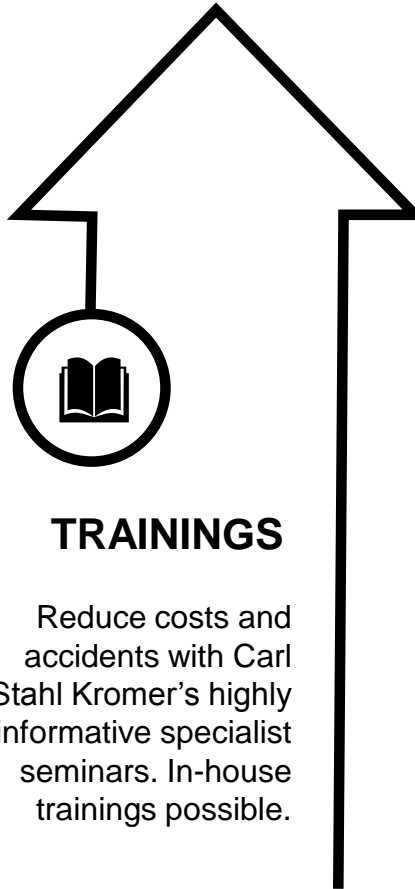
In comparison: The Kromer Balancer still run even after more than 500.000 strokes.

About our **services**



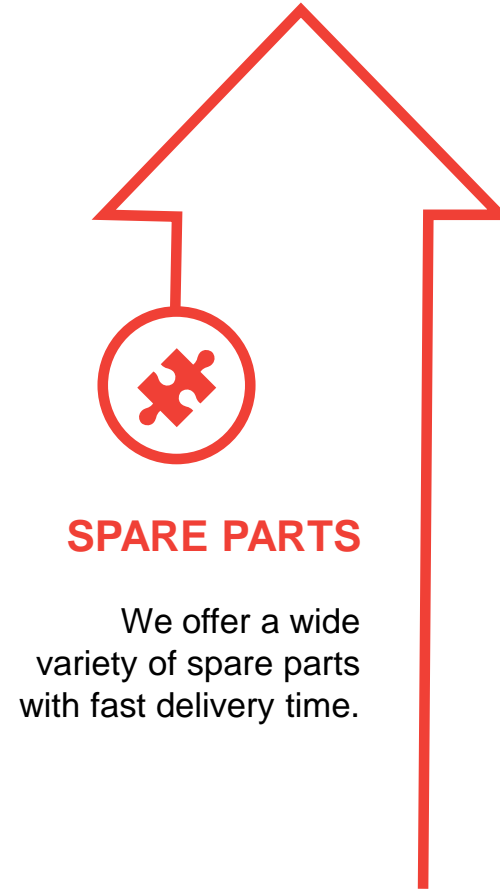
Customers first

We place the greatest importance on **comprehensive service** for our customers. That is why we offer services that go beyond our product. Competent consulting and comprehensive answers to all questions are provided as a matter of course. We are also happy to work closely with our customers to develop precisely **tailored solutions**. We also offer unique **training services**.



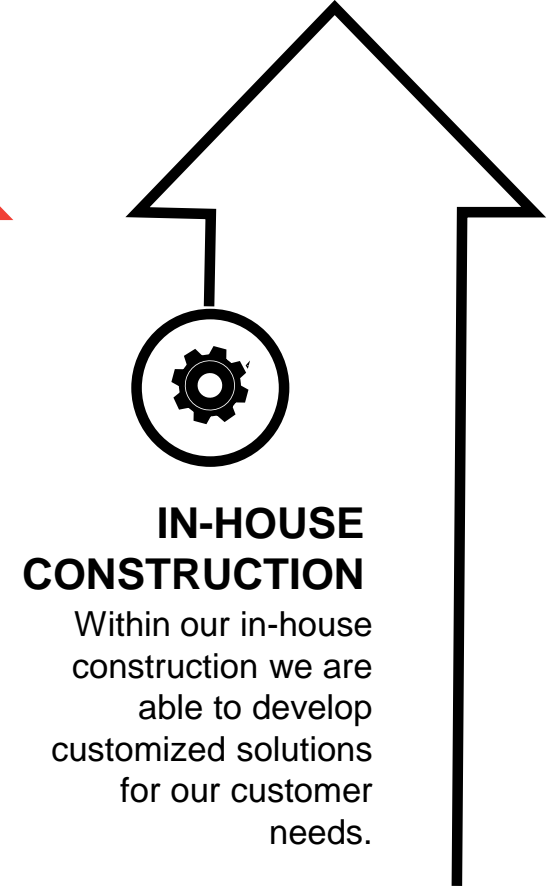
TRAININGS

Reduce costs and accidents with Carl Stahl Kromer's highly informative specialist seminars. In-house trainings possible.



SPARE PARTS

We offer a wide variety of spare parts with fast delivery time.



IN-HOUSE CONSTRUCTION

Within our in-house construction we are able to develop customized solutions for our customer needs.

About **your** benefits

A decision for Kromer is a good decision.



- ✓ **LONG-LIVE CYCLE**
- ✓ **ERROR-FREE AND PRECISE WORK**
- ✓ **HIGHEST SAFETY FOR USERS**
- ✓ **IMPROVED WORK-FLOW**
- ✓ **CUSTOMIZED SOLUTIONS**
- ✓ **EASY AND FAST MAINTENANCE**
- ✓ **EASY AND FAST REPAIR**

DO NOT HESITATE TO **CONTACT US**

Carl Stahl

KROMER

Carl Stahl Kromer GmbH

Nägelseestraße 37

79288 Gottenheim

Germany



+49 (0) 7665 50207 - 0



kromer@carlstahl.com



www.carlstahlkromer.com

KROMERNEWS

VIDEOS- TUTORIALS — NEWS — EVENTS — INSIGHTS — CONTENT - IMPRESSIONS

